

PLACEMENT HIGHLIGHTS 2016-18



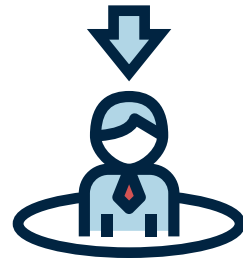
**FUTURE
READY
PROFESSIONALS...**

BATCH PLACEMENT SUMMARY 2016-18



Batch size

420



Placed

408



Outcome

97.14%
PLACED



No. of Companies

117

KEY RECRUITERS 2016-18



PLACEMENT HIGHLIGHTS 2016-18



Highest Package
(International)

INR 18.00 LAKH



Highest Package
(Domestic)

INR 15.00 LAKH



PGDM

OVERALL COMPARATIVE PLACEMENT HIGHLIGHT 2016-18



8.14 LAC

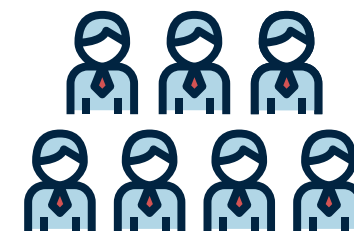
Average INR CTC 2017-19
(as on 28th Feb. 2019)

7.68 LAC

Average INR CTC 2016-18

7.50 LAC

Average INR CTC 2015-17



PGDM-IB

OVERALL COMPARATIVE PLACEMENT HIGHLIGHT 2016-18



7.87 LAC

Average INR CTC 2017-19
(as on 28th Feb. 2019)

7.48 LAC

Average INR CTC 2016-18

7.21 LAC

Average INR CTC 2015-17



PGDM-IBM

OVERALL COMPARATIVE PLACEMENT HIGHLIGHT 2016-18



7.67 LAC

Average INR CTC 2017-19
(as on 28th Feb 2019)

7.17 LAC

Average INR CTC 2016-18

7.14 LAC

Average INR CTC 2015-17



PGDM-RM

OVERALL COMPARATIVE PLACEMENT HIGHLIGHT 2016-18



7.73 LAC

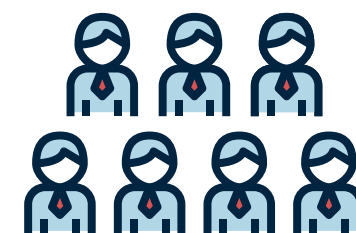
Average INR CTC 2017-19
(as on 28th Feb 2019)

7.03 LAC

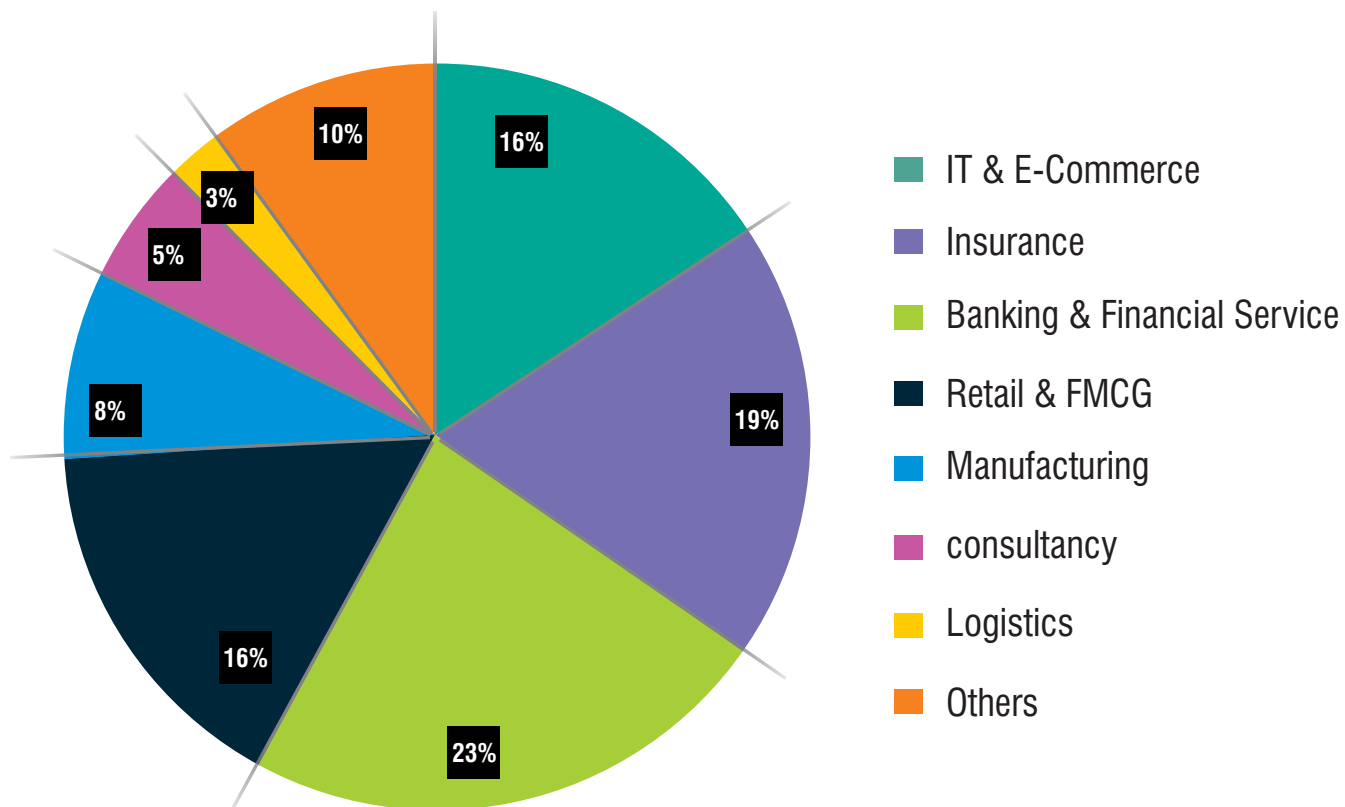
Average INR CTC 2016-18

7.32 LAC

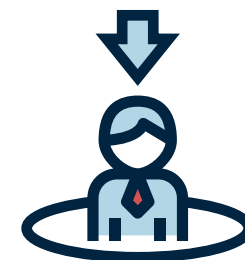
Average INR CTC 2015-17



SECTORIAL ANALYSIS 2016-18



97.14% PLACED



KEY RECRUITERS

PGDM & PGDM (IB)

2016-18



KEY RECRUITERS PGDM (IBM) 2016-18

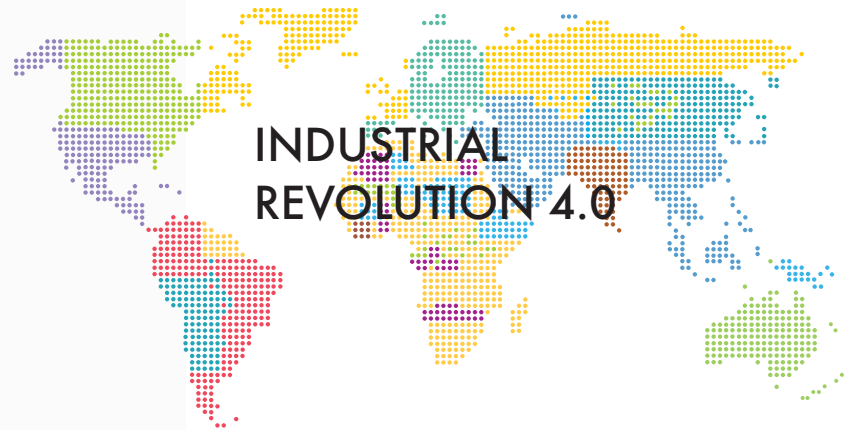


KEY RECRUITERS PGDM (RM) 2016-18





**FUTURE
READY
PROFESSIONALS...**



**INDUSTRIAL
REVOLUTION 4.0**



Birla Institute of Management Technology

Plot No. 5, Knowledge Park II, Greater Noida (NCR) Uttar Pradesh-201 306, India

Tel: +91-120-2323001-10 (Ext. 355 / 326 / 327 / 328)

Fax: +91-120-2323022/25



www.bimtech.ac.in