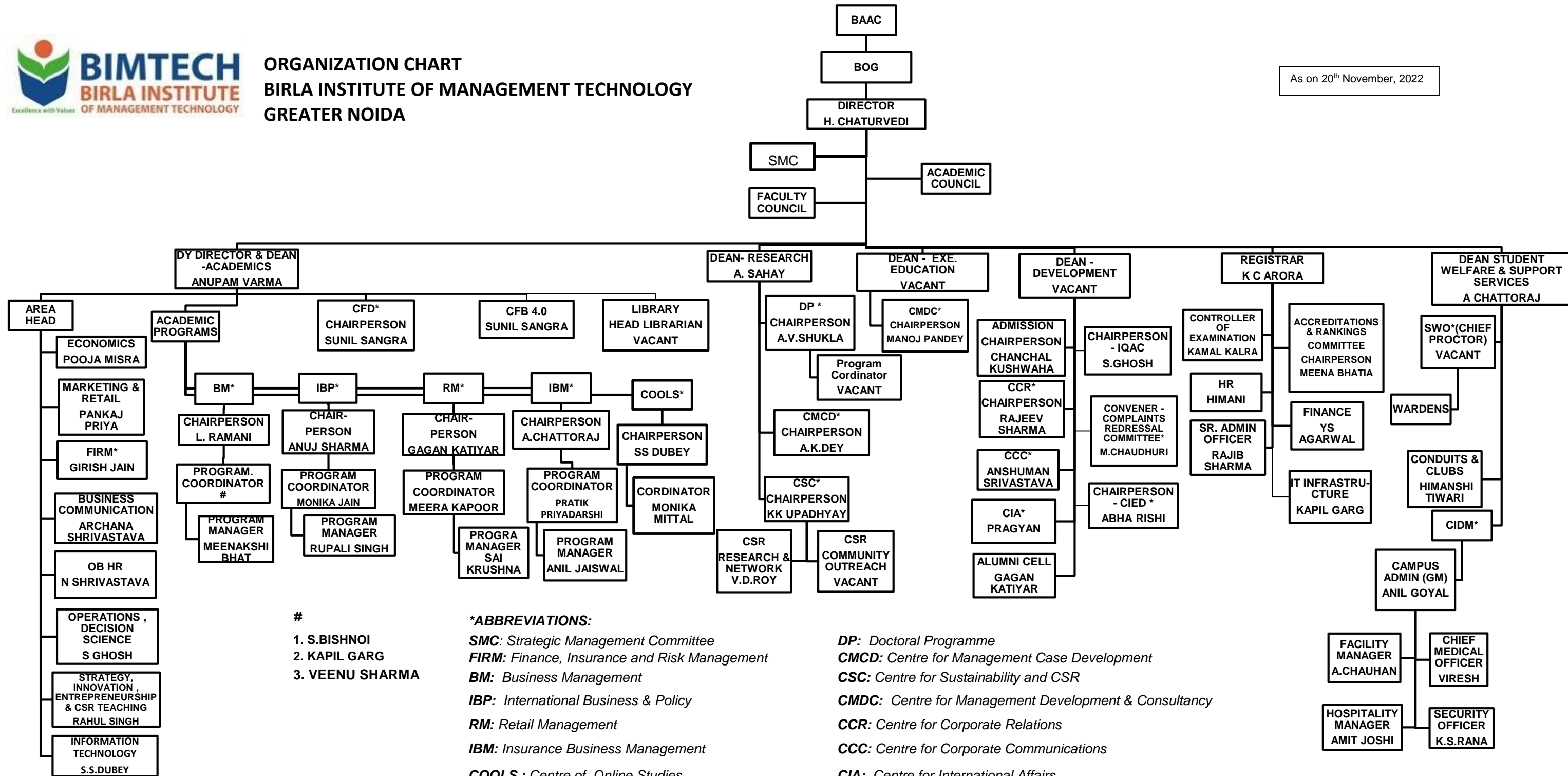




**ORGANIZATION CHART**  
**BIRLA INSTITUTE OF MANAGEMENT TECHNOLOGY**  
**GREATER NOIDA**

As on 20<sup>th</sup> November, 2022



- #
1. S.BISHNOI
  2. KAPIL GARG
  3. VEENU SHARMA

**\*ABBREVIATIONS:**  
**SMC:** Strategic Management Committee  
**FIRM:** Finance, Insurance and Risk Management  
**BM:** Business Management  
**IBP:** International Business & Policy  
**RM:** Retail Management  
**IBM:** Insurance Business Management  
**COOLS :** Centre of Online Studies  
**CFD:** Centre for Faculty Development  
**CFB 4.0 :** Centre for Business 4.0  
**Complaints Redressal Committee:** Committee for Redressal of Internal Complaints on Sexual Harassment and for the Promotion of Diversity

**DP:** Doctoral Programme  
**CMCD:** Centre for Management Case Development  
**CSC:** Centre for Sustainability and CSR  
**CMDC:** Centre for Management Development & Consultancy  
**CCR:** Centre for Corporate Relations  
**CCC:** Centre for Corporate Communications  
**CIA:** Centre for International Affairs  
**SWO:** Student Welfare Office  
**CIDM:** Campus Infrastructure Development and Maintenance  
**CIED:** Centre for Innovation and Entrepreneurship Development. Attached directly with Director since he also oversees Atal Incubation Centre as its main Trustee